

TOURIST ACCOMMODATION

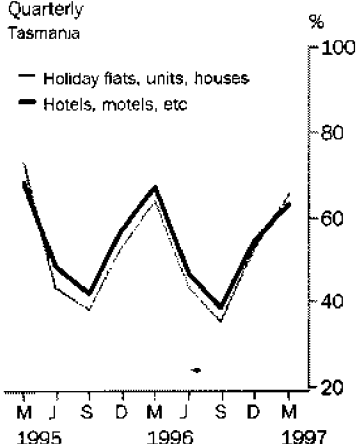
TASMANIA

EMBARGO: 11:30AM (CANBERRA TIME) FRI 13 JUN 1997

Occupancy rates

Quarterly
Tasmania

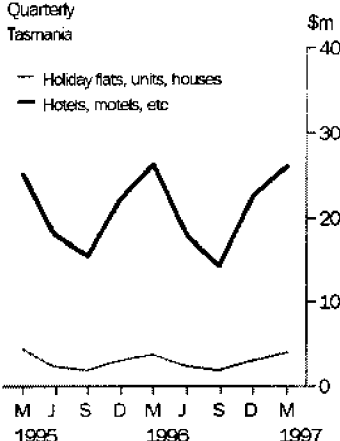
— Holiday flats, units, houses
— Hotels, motels, etc



Accommodation takings

Quarterly
Tasmania

— Holiday flats, units, houses
— Hotels, motels, etc



MARCH QTR KEY FIGURES

| | Mar 96 | Mar 97 | change |
|--|--------|--------|----------|
| Hotels, Motels and Guest Houses (a) | | | |
| Rooms available (No.) | 5 520 | 5 611 | 1.6 % |
| Room occupancy rate (%) | 67.1 | 62.9 | -4.2 pts |
| Takings from accommodation (\$'000) | 26 267 | 25 850 | -1.6 % |
| Holiday Flats, Units and Houses (a) | | | |
| Units, etc. available (No.) | 830 | 862 | 3.9 % |
| Unit occupancy rate (%) | 64.2 | 65.5 | 1.3 pts |
| Takings from accommodation (\$'000) | 3 835 | 3 961 | 3.3 % |
| Caravan Parks | | | |
| Sites, cabins, etc. available (No.) | 6 524 | 6 568 | 0.7 % |
| Site occupancy rate (%) | 42.1 | 43.8 | 1.7 pts |
| Takings from accommodation (\$'000) | 3 126 | 3 199 | 2.3 % |
| Visitor Hostels (a) | | | |
| Bed spaces available (No.) | 1 727 | 2 186 | 26.6 % |
| Bed occupancy rate (%) | 30.6 | 29.5 | -1.1 pts |
| Takings from accommodation (\$'000) | 580 | 698 | 20.3 % |

(a) Coverage breaks in series occurred as from: September quarter 1996. See page 2, 'Coverage update'.

MARCH QTR KEY POINTS

HOTELS, MOTELS AND GUEST HOUSES

- Demand in terms of room nights occupied fell by 5.8% in the March quarter 1997 compared with the March quarter 1996. Available capacity increased slightly and the room occupancy rate fell to 62.9%, the lowest March quarter rate since 1992. Average takings per room night occupied rose from \$78 to \$81.

HOLIDAY FLATS, UNITS AND HOUSES

- Unit nights occupied increased by 4.7% in the March quarter 1997 compared with the March quarter 1996 and the unit occupancy rate rose by 1.3 percentage points to 65.5%. Average takings per unit night occupied decreased slightly to \$78.

CARAVAN PARKS

- Demand for caravan park sites, etc. increased by 3.7% in the March quarter 1997 compared with the March quarter 1996. The site occupancy rate at 43.8% was the highest rate for any quarter since the break in series as from the September quarter 1992. See page 20, 'Occupancy'. Takings from accommodation increased by 2.3% to \$3.2m with takings per site night occupied averaging \$12.

INQUIRIES

- For further information about these and related statistics, contact Jennifer Cox on 07 3222 6148, or any ABS Office.

NOTES

FORTHCOMING ISSUES

ISSUE (Quarter)

EXPECTED RELEASE DATE

June 1997

12 September 1997

.....

CHANGES IN THIS ISSUE

There are no changes in this issue.

.....

COVERAGE UPDATE

As a result of improved coverage of in-scope establishments in Tasmania from September quarter 1996, there are minor breaks in series for hotels, motels and guest houses and for holiday flats, units and houses respectively and a major break in series for visitor hostels.

For hotels, motels and guest houses, improved coverage of in-scope establishments represented 1.1% of rooms available, 0.9% of bedspaces and 0.6% of both room nights occupied and takings from accommodation as published for September quarter 1996.

For holiday flats, units and houses, improved coverage accounted for 1.6% of flats and units available, 2.0% of bedspaces and 1.8% of both unit nights occupied and takings from accommodation as published for September quarter 1996.

For visitor hostels, improved coverage of in-scope establishments represented 20.4% of bedspaces available, 21.4% of guest nights and 21.1% of takings from accommodation as published for September quarter 1996.

.....

COLIN NAGLE

Acting Regional Director, Tasmania

TABLE 1 — SUMMARY OF HOTELS, MOTELS AND GUEST HOUSES WITH FACILITIES, TASMANIA (a)

| Particulars | Unit | Quarter ended | | | | Year ended | | | |
|---|----------|---------------|------------|-----------|----------------|---------------|------------|------------|------------|
| | | December 1995 | March 1996 | June 1996 | September 1996 | December 1996 | March 1997 | March 1996 | March 1997 |
| LICENSED HOTELS WITH FACILITIES | | | | | | | | | |
| Establishments | No. | 92 | 92 | 92 | 92 | 91 | 91 | .. | .. |
| Guest rooms | No. | 3,566 | 3,580 | 3,582 | 3,510 | 3,532 | 3,498 | .. | .. |
| Bed spaces | No. | 9,911 | 9,924 | 10,015 | 9,817 | 9,860 | 9,733 | .. | .. |
| Employment (persons) | No. | 3,772 | 3,659 | 3,495 | 3,475 | 3,671 | 3,655 | .. | .. |
| Room nights occupied | No. | 186,265 | 211,766 | 149,879 | 129,619 | 175,395 | 191,887 | 695,727 | 646,780 |
| Room occupancy rate | per cent | 56.8 | 65.0 | 46.1 | 40.1 | 54.0 | 61.0 | 53.3 | 50.2 |
| Guest nights | No. | 309,095 | 371,418 | 242,777 | 202,198 | 290,642 | 335,286 | 1,169,608 | 1,070,903 |
| Bed occupancy rate | per cent | 33.9 | 41.1 | 26.7 | 22.4 | 32.0 | 38.3 | 32.2 | 29.8 |
| Guest arrivals | No. | 166,013 | 201,995 | 127,544 | 109,504 | 156,629 | 181,994 | 628,023 | 575,671 |
| Average length of stay | days | 1.9 | 1.8 | 1.9 | 1.8 | 1.9 | 1.8 | 1.9 | 1.9 |
| Takings from accommodation | \$'000 | 15,252 | 17,496 | 12,129 | 9,784 | 14,941 | 16,489 | 56,492 | 53,343 |
| MOTELS AND GUEST HOUSES WITH FACILITIES | | | | | | | | | |
| Establishments | No. | 88 | 88 | 88 | 96 | 96 | 98 | .. | .. |
| Guest rooms | No. | 1,937 | 1,940 | 1,941 | 2,094 | 2,072 | 2,113 | .. | .. |
| Bed spaces | No. | 5,981 | 6,075 | 6,028 | 6,384 | 6,335 | 6,494 | .. | .. |
| Employment (persons) | No. | 874 | 884 | 762 | 787 | 949 | 953 | .. | .. |
| Room nights occupied | No. | 102,522 | 125,440 | 84,416 | 69,743 | 107,372 | 125,611 | 379,482 | 387,142 |
| Room occupancy rate | per cent | 57.5 | 71.1 | 47.8 | 36.2 | 56.3 | 66.1 | 54.4 | 51.6 |
| Guest nights | No. | 187,096 | 237,395 | 150,164 | 122,109 | 198,706 | 239,625 | 702,699 | 710,604 |
| Bed occupancy rate | per cent | 34.0 | 42.9 | 27.4 | 20.8 | 34.1 | 41.0 | 32.5 | 30.9 |
| Guest arrivals | No. | 106,934 | 139,100 | 92,343 | 73,074 | 123,164 | 140,639 | 409,309 | 429,220 |
| Average length of stay | days | 1.7 | 1.7 | 1.6 | 1.7 | 1.6 | 1.7 | 1.7 | 1.7 |
| Takings from accommodation | \$'000 | 6,838 | 8,771 | 5,686 | 4,578 | 7,614 | 9,360 | 25,319 | 27,239 |
| TOTAL HOTELS, MOTELS AND GUEST HOUSES WITH FACILITIES | | | | | | | | | |
| Establishments | No. | 180 | 180 | 180 | 188 | 187 | 189 | .. | .. |
| Guest rooms | No. | 5,503 | 5,520 | 5,523 | 5,604 | 5,604 | 5,611 | .. | .. |
| Bed spaces | No. | 15,892 | 15,999 | 16,043 | 16,201 | 16,195 | 16,227 | .. | .. |
| Employment (persons) | No. | 4,646 | 4,543 | 4,257 | 4,262 | 4,620 | 4,608 | .. | .. |
| Room nights occupied | No. | 288,787 | 337,206 | 234,295 | 199,362 | 282,767 | 317,498 | 1,075,209 | 1,033,922 |
| Room occupancy rate | per cent | 57.0 | 67.1 | 46.7 | 38.7 | 54.8 | 62.9 | 53.7 | 50.7 |
| Guest nights | No. | 496,191 | 608,813 | 392,941 | 324,307 | 489,348 | 574,911 | 1,872,307 | 1,781,507 |
| Bed occupancy rate | per cent | 33.9 | 41.8 | 27.0 | 21.8 | 32.8 | 39.4 | 32.3 | 30.2 |
| Guest arrivals | No. | 272,947 | 341,095 | 219,887 | 182,578 | 279,793 | 322,633 | 1,037,332 | 1,004,891 |
| Average length of stay | days | 1.8 | 1.8 | 1.8 | 1.8 | 1.7 | 1.8 | 1.8 | 1.8 |
| Takings from accommodation | \$'000 | 22,090 | 26,267 | 17,815 | 14,362 | 22,556 | 25,850 | 81,811 | 80,583 |

(a) Coverage breaks in series occurred as from September quarter 1996. See page 2, "Coverage update".

TABLE 2 — SUMMARY OF CARAVAN PARKS, TASMANIA

| Particulars | Unit | Quarter ended | | | | Year ended | | | |
|------------------------------------|----------|---------------|------------|-----------|----------------|---------------|------------|------------|------------|
| | | December 1995 | March 1996 | June 1996 | September 1996 | December 1996 | March 1997 | March 1996 | March 1997 |
| SHORT-TERM CARAVAN PARKS | | | | | | | | | |
| Establishments | No. | 59 | 59 | 60 | 57 | 57 | 57 | .. | .. |
| Capacity | | | | | | | | | |
| On-site vans | No. | 259 | 244 | 235 | 235 | 229 | 230 | .. | .. |
| Other powered sites | No. | 2,907 | 2,980 | 2,941 | 2,839 | 2,872 | 2,898 | .. | .. |
| Unpowered sites | No. | 1,750 | 1,768 | 1,778 | 1,691 | 1,665 | 1,698 | .. | .. |
| Cabins, etc. | No. | 376 | 394 | 386 | 356 | 366 | 372 | .. | .. |
| Total capacity | No. | 5,292 | 5,386 | 5,340 | 5,121 | 5,132 | 5,198 | .. | .. |
| Sites occupied by long-term guests | No. | 221 | 211 | 227 | 202 | 189 | 196 | .. | .. |
| Other sites permanently reserved | No. | 1,050 | 1,061 | 1,053 | 1,072 | 1,074 | 1,084 | .. | .. |
| Employment (persons) | No. | 225 | 224 | 196 | 201 | 241 | 228 | .. | .. |
| Site nights occupied | No. | 166,716 | 213,884 | 151,778 | 140,470 | 163,816 | 214,418 | 672,149 | 670,482 |
| Site occupancy rate | per cent | 34.2 | 43.6 | 31.2 | 29.8 | 34.7 | 45.8 | 34.1 | 35.3 |
| Takings from accommodation | \$'000 | 1,544 | 2,606 | 1,229 | 878 | 1,499 | 2,538 | 6,229 | 6,143 |
| LONG-TERM CARAVAN PARKS | | | | | | | | | |
| Establishments | No. | 13 | 13 | 13 | 16 | 16 | 16 | .. | .. |
| Capacity | | | | | | | | | |
| On-site vans | No. | 121 | 122 | 132 | 135 | 136 | 135 | .. | .. |
| Other powered sites | No. | 578 | 573 | 565 | 662 | 661 | 693 | .. | .. |
| Unpowered sites | No. | 360 | 351 | 350 | 438 | 437 | 409 | .. | .. |
| Cabins, etc. | No. | 89 | 92 | 92 | 135 | 134 | 133 | .. | .. |
| Total capacity | No. | 1,148 | 1,138 | 1,139 | 1,370 | 1,368 | 1,370 | .. | .. |
| Sites occupied by long-term guests | No. | 198 | 211 | 223 | 240 | 228 | 232 | .. | .. |
| Other sites permanently reserved | No. | 41 | 36 | 33 | 35 | 33 | 33 | .. | .. |
| Employment (persons) | No. | 46 | 49 | 48 | 63 | 64 | 66 | .. | .. |
| Site nights occupied | No. | 29,884 | 35,972 | 28,260 | 28,722 | 33,987 | 44,633 | 119,223 | 135,602 |
| Site occupancy rate | per cent | 28.3 | 34.7 | 27.3 | 22.8 | 27.0 | 36.2 | 29.6 | 28.3 |
| Takings from accommodation | \$'000 | 378 | 520 | 346 | 331 | 484 | 661 | 1,454 | 1,822 |
| TOTAL CARAVAN PARKS | | | | | | | | | |
| Establishments | No. | 72 | 72 | 73 | 73 | 73 | 73 | .. | .. |
| Capacity | | | | | | | | | |
| On-site vans | No. | 380 | 366 | 367 | 370 | 365 | 365 | .. | .. |
| Other powered sites | No. | 3,485 | 3,553 | 3,506 | 3,501 | 3,533 | 3,591 | .. | .. |
| Unpowered sites | No. | 2,110 | 2,119 | 2,128 | 2,129 | 2,102 | 2,107 | .. | .. |
| Cabins, etc. | No. | 465 | 486 | 478 | 491 | 500 | 505 | .. | .. |
| Total capacity | No. | 6,440 | 6,524 | 6,479 | 6,491 | 6,500 | 6,568 | .. | .. |
| Sites occupied by long-term guests | No. | 419 | 422 | 450 | 442 | 417 | 428 | .. | .. |
| Other sites permanently reserved | No. | 1,091 | 1,097 | 1,086 | 1,107 | 1,107 | 1,117 | .. | .. |
| Employment (persons) | No. | 271 | 273 | 244 | 264 | 305 | 294 | .. | .. |
| Site nights occupied | No. | 196,600 | 249,856 | 180,038 | 169,192 | 197,803 | 259,051 | 791,372 | 806,084 |
| Site occupancy rate | per cent | 33.2 | 42.1 | 30.5 | 28.3 | 33.1 | 43.8 | 33.3 | 33.9 |
| Takings from accommodation | \$'000 | 1,923 | 3,126 | 1,575 | 1,209 | 1,983 | 3,199 | 7,683 | 7,965 |

TABLE 3 — SUMMARY OF HOLIDAY FLATS, UNITS AND HOUSES, TASMANIA (a)

| Particulars | Unit | Quarter ended | | | | Year ended | | | |
|-------------------------------|----------|---------------|------------|-----------|----------------|---------------|------------|------------|------------|
| | | December 1995 | March 1996 | June 1996 | September 1996 | December 1996 | March 1997 | March 1996 | March 1997 |
| Letting entities | No. | 54 | 54 | 55 | 57 | 57 | 57 | .. | .. |
| Flats, units and houses | | | | | | | | | |
| Single bedroom | No. | 235 | 235 | 241 | 240 | 240 | 241 | .. | .. |
| Multiple bedroom | No. | 595 | 595 | 605 | 618 | 621 | 621 | .. | .. |
| Total flats, units and houses | No. | 830 | 830 | 846 | 858 | 861 | 862 | .. | .. |
| Bed spaces | No. | 3,660 | 3,657 | 3,696 | 3,800 | 3,810 | 3,797 | .. | .. |
| Employment (persons) | No. | 367 | 356 | 307 | 322 | 341 | 349 | .. | .. |
| Unit nights occupied | No. | 40,351 | 48,512 | 33,371 | 28,000 | 41,935 | 50,798 | 150,538 | 154,104 |
| Unit occupancy rate | per cent | 52.8 | 64.2 | 43.3 | 35.5 | 52.9 | 65.5 | 49.8 | 49.3 |
| Unit lettings | No. | 19,731 | 23,801 | 16,116 | 13,426 | 20,950 | 24,189 | 72,640 | 74,681 |
| Average length of stay | days | 2.0 | 2.0 | 2.1 | 2.1 | 2.0 | 2.1 | 2.1 | 2.1 |
| Takings from accommodation | \$'000 | 2,958 | 3,835 | 2,374 | 1,922 | 2,990 | 3,961 | 11,069 | 11,248 |

(a) Coverage breaks in series occurred as from September quarter 1996. See page 2, "Coverage update".

TABLE 4 — SUMMARY OF VISITOR HOSTELS, TASMANIA (a)

| Particulars | Unit | Quarter ended | | | | Year ended | | | |
|----------------------------|----------|---------------|------------|-----------|----------------|---------------|------------|------------|------------|
| | | December 1995 | March 1996 | June 1996 | September 1996 | December 1996 | March 1997 | March 1996 | March 1997 |
| Establishments | No. | 41 | 41 | 40 | 46 | 47 | 49 | .. | .. |
| Bed spaces | No. | 1,719 | 1,727 | 1,684 | 2,096 | 2,120 | 2,186 | .. | .. |
| Employment (persons) | No. | 110 | 112 | 105 | 130 | 143 | 156 | .. | .. |
| Guest nights | No. | 29,682 | 48,155 | 21,872 | 17,803 | 33,812 | 57,555 | 110,898 | 131,042 |
| Bed occupancy rate | per cent | 18.8 | 30.6 | 14.3 | 9.2 | 17.6 | 29.5 | 17.5 | 17.9 |
| Guest arrivals | No. | 19,053 | 32,208 | 13,386 | 11,743 | 22,296 | 36,215 | 72,040 | 83,640 |
| Average length of stay | days | 1.6 | 1.5 | 1.6 | 1.5 | 1.5 | 1.6 | 1.5 | 1.6 |
| Takings from accommodation | \$'000 | 361 | 580 | 261 | 207 | 409 | 698 | 1,326 | 1,575 |

(a) Coverage breaks in series occurred as from September quarter 1996. See page 2, "Coverage update".

TABLE 5 — HOTELS, MOTELS AND GUEST HOUSES WITH FACILITIES BY STAR GRADING, TASMANIA (a)

| Particulars | Licensed hotels with facilities | Motels and guest houses | Star grading | | | Total |
|---|---------------------------------------|-------------------------------|----------------------|---------|---------|---------|
| | | | 1, 2 and Ungraded | 3 | 4 and 5 | |
| ESTABLISHMENTS, CAPACITY AND EMPLOYMENT | | | | | | |
| March quarter 1996— | | | | | | |
| Establishments | 92 | 88 | 65 | 85 | 30 | 180 |
| Guest rooms | 3,580 | 1,940 | 1,232 | 2,656 | 1,632 | 5,520 |
| Bed spaces | 9,924 | 6,075 | 3,404 | 7,934 | 4,661 | 15,999 |
| Employment (persons) | 3,659 | 884 | 837 | 1,481 | 2,225 | 4,543 |
| March quarter 1997— | | | | | | |
| Establishments | 91 | 98 | 74 | 75 | 40 | 189 |
| Guest rooms | 3,498 | 2,113 | 1,429 | 2,432 | 1,750 | 5,611 |
| Bed spaces | 9,733 | 6,494 | 4,025 | 7,315 | 4,887 | 16,227 |
| Employment (persons) | 3,655 | 953 | 1,319 | 1,313 | 1,976 | 4,608 |
| ROOM NIGHTS OCCUPIED | | | | | | |
| March quarter 1996 | 211,766 | 125,440 | 57,800 | 166,172 | 113,234 | 337,206 |
| 1997— | | | | | | |
| January | 58,200 | 39,139 | 20,863 | 41,165 | 35,311 | 97,339 |
| February | 62,096 | 40,693 | 21,656 | 44,446 | 36,687 | 102,789 |
| March | 71,591 | 45,779 | 23,858 | 52,042 | 41,470 | 117,370 |
| March quarter 1997 | 191,887 | 125,611 | 66,377 | 137,653 | 113,468 | 317,498 |
| ROOM OCCUPANCY RATES (per cent) | | | | | | |
| March quarter 1996 | 65.0 | 71.1 | 51.6 | 68.8 | 76.2 | 67.1 |
| 1997— | | | | | | |
| January | 53.7 | 59.8 | 47.1 | 54.6 | 65.1 | 56.0 |
| February | 63.4 | 68.8 | 54.1 | 65.3 | 74.9 | 65.4 |
| March | 66.0 | 69.9 | 53.9 | 69.0 | 76.4 | 67.5 |
| March quarter 1997 | 61.0 | 66.1 | 51.6 | 62.9 | 72.0 | 62.9 |
| GUEST NIGHTS | | | | | | |
| March quarter 1996 | 371,418 | 237,395 | 102,447 | 314,833 | 191,533 | 608,813 |
| 1997— | | | | | | |
| January | 107,751 | 80,738 | 40,650 | 84,261 | 63,578 | 188,489 |
| February | 107,236 | 73,918 | 37,643 | 83,176 | 60,335 | 181,154 |
| March | 120,299 | 84,969 | 42,186 | 96,800 | 66,282 | 205,268 |
| March quarter 1997 | 335,286 | 239,625 | 120,479 | 264,237 | 190,195 | 574,911 |
| BED OCCUPANCY RATES (per cent) | | | | | | |
| March quarter 1996 | 41.1 | 42.9 | 33.1 | 43.6 | 45.2 | 41.8 |
| 1997— | | | | | | |
| January | 35.7 | 40.1 | 32.6 | 37.2 | 42.0 | 37.5 |
| February | 39.3 | 40.7 | 33.4 | 40.6 | 44.1 | 39.9 |
| March | 39.9 | 42.2 | 33.8 | 42.7 | 43.8 | 40.8 |
| March quarter 1997 | 38.3 | 41.0 | 33.3 | 40.1 | 43.2 | 39.4 |
| GUEST ARRIVALS | | | | | | |
| March quarter 1996 | 201,995 | 139,100 | 61,207 | 194,553 | 85,335 | 341,095 |
| 1997— | | | | | | |
| January | 56,488 | 46,604 | 22,974 | 50,964 | 29,154 | 103,092 |
| February | 59,049 | 43,918 | 21,131 | 52,164 | 29,672 | 102,967 |
| March | 66,457 | 50,117 | 24,611 | 59,943 | 32,020 | 116,574 |
| March quarter 1997 | 181,994 | 140,639 | 68,716 | 163,071 | 90,846 | 322,633 |
| AVERAGE LENGTH OF STAY (days) | | | | | | |
| March quarter 1996 | 1.8 | 1.7 | 1.7 | 1.6 | 2.2 | 1.8 |
| March quarter 1997 | 1.8 | 1.7 | 1.8 | 1.6 | 2.1 | 1.8 |
| TAKINGS FROM ACCOMMODATION (\$'000) | | | | | | |
| March quarter 1996 | 17,496 | 8,771 | 3,370 | 11,465 | 11,431 | 26,267 |
| 1997— | | | | | | |
| January | 5,083 | 3,053 | 1,518 | 3,032 | 3,585 | 8,135 |
| February | 5,345 | 3,007 | 1,548 | 3,087 | 3,717 | 8,352 |
| March | 6,062 | 3,300 | 1,729 | 3,495 | 4,138 | 9,362 |
| March quarter 1997 | 16,489 | 9,360 | 4,794 | 9,615 | 11,441 | 25,850 |

(a) Coverage breaks in series occurred as from September quarter 1996. See page 2, "Coverage update".

TABLE 6 — HOTELS, MOTELS AND GUEST HOUSES WITH FACILITIES BY ESTABLISHMENT SIZE, TASMANIA (a)

| Particulars | Establishment size (No. of rooms) | | | | | | Total |
|---|-----------------------------------|--------|--------|---------|---------|---------|---------|
| | 5-9 | 10-15 | 16-25 | 26-50 | 51-100 | 101+ | |
| ESTABLISHMENTS, CAPACITY AND EMPLOYMENT | | | | | | | |
| March quarter 1996— | | | | | | | |
| Establishments | 43 | 28 | 31 | 50 | 20 | 8 | 180 |
| Guest rooms | 306 | 321 | 629 | 1,716 | 1,299 | 1,249 | 5,520 |
| Bed spaces | 783 | 888 | 1,762 | 5,115 | 4,032 | 3,419 | 15,999 |
| Employment (persons) | 230 | 339 | 436 | 947 | 745 | 1,846 | 4,543 |
| March quarter 1997— | | | | | | | |
| Establishments | 48 | 33 | 28 | 52 | 20 | 8 | 189 |
| Guest rooms | 333 | 378 | 587 | 1,786 | 1,283 | 1,244 | 5,611 |
| Bed spaces | 815 | 1,067 | 1,650 | 5,378 | 3,949 | 3,368 | 16,227 |
| Employment (persons) | 290 | 360 | 407 | 926 | 765 | 1,860 | 4,608 |
| ROOM NIGHTS OCCUPIED | | | | | | | |
| March quarter 1996 | 15,866 | 17,912 | 36,072 | 101,489 | 78,372 | 87,495 | 337,206 |
| 1997— | | | | | | | |
| January | 5,505 | 5,985 | 9,555 | 28,679 | 22,897 | 24,718 | 97,339 |
| February | 5,151 | 6,347 | 10,107 | 31,471 | 23,374 | 26,339 | 102,789 |
| March | 5,767 | 6,722 | 11,627 | 35,998 | 26,576 | 30,680 | 117,370 |
| March quarter 1997 | 16,423 | 19,054 | 31,289 | 96,148 | 72,847 | 81,737 | 317,498 |
| ROOM OCCUPANCY RATES (per cent) | | | | | | | |
| March quarter 1996 | 57.0 | 61.3 | 63.0 | 65.0 | 66.3 | 77.0 | 67.1 |
| 1997— | | | | | | | |
| January | 53.3 | 51.1 | 52.5 | 51.8 | 57.6 | 64.1 | 56.0 |
| February | 55.2 | 60.0 | 61.5 | 62.9 | 65.1 | 75.6 | 65.4 |
| March | 55.9 | 57.4 | 63.9 | 65.0 | 66.8 | 79.6 | 67.5 |
| March quarter 1997 | 54.8 | 56.0 | 59.2 | 59.8 | 63.1 | 73.0 | 62.9 |
| GUEST NIGHTS | | | | | | | |
| March quarter 1996 | 26,914 | 31,472 | 65,755 | 186,438 | 152,758 | 145,476 | 608,813 |
| 1997— | | | | | | | |
| January | 9,554 | 10,608 | 19,101 | 57,243 | 48,640 | 43,343 | 188,489 |
| February | 8,698 | 10,736 | 17,718 | 56,637 | 44,637 | 42,728 | 181,154 |
| March | 9,790 | 11,496 | 20,896 | 65,117 | 49,211 | 48,758 | 205,268 |
| March quarter 1997 | 28,042 | 32,840 | 57,715 | 178,997 | 142,488 | 134,829 | 574,911 |
| BED OCCUPANCY RATES (per cent) | | | | | | | |
| March quarter 1996 | 37.8 | 38.9 | 41.0 | 40.1 | 41.6 | 46.8 | 41.8 |
| 1997— | | | | | | | |
| January | 37.8 | 32.1 | 37.3 | 34.3 | 39.7 | 41.5 | 37.5 |
| February | 38.1 | 35.9 | 38.4 | 37.6 | 40.4 | 45.3 | 39.9 |
| March | 38.7 | 34.8 | 40.9 | 39.1 | 40.2 | 46.7 | 40.8 |
| March quarter 1997 | 38.2 | 34.2 | 38.9 | 37.0 | 40.1 | 44.5 | 39.4 |
| GUEST ARRIVALS | | | | | | | |
| March quarter 1996 | 16,696 | 19,214 | 40,551 | 115,290 | 94,550 | 54,794 | 341,095 |
| 1997— | | | | | | | |
| January | 6,049 | 6,500 | 10,512 | 35,375 | 29,293 | 15,363 | 103,092 |
| February | 5,692 | 6,714 | 9,691 | 35,451 | 28,172 | 17,247 | 102,967 |
| March | 6,303 | 7,197 | 11,488 | 40,604 | 31,986 | 18,996 | 116,574 |
| March quarter 1997 | 18,044 | 20,411 | 31,691 | 111,430 | 89,451 | 51,606 | 322,633 |
| AVERAGE LENGTH OF STAY (days) | | | | | | | |
| March quarter 1996 | 1.6 | 1.6 | 1.6 | 1.6 | 1.6 | 2.7 | 1.8 |
| March quarter 1997 | 1.6 | 1.6 | 1.8 | 1.6 | 1.6 | 2.6 | 1.8 |
| TAKINGS FROM ACCOMMODATION (\$'000) | | | | | | | |
| March quarter 1996 | 945 | 1,018 | 2,112 | 6,498 | 6,991 | 8,703 | 26,267 |
| 1997— | | | | | | | |
| January | 362 | 372 | 656 | 1,976 | 2,228 | 2,542 | 8,135 |
| February | 334 | 370 | 638 | 2,110 | 2,146 | 2,753 | 8,352 |
| March | 383 | 378 | 722 | 2,373 | 2,392 | 3,115 | 9,362 |
| March quarter 1997 | 1,078 | 1,120 | 2,016 | 6,459 | 6,766 | 8,410 | 25,850 |

(a) Coverage breaks in series occurred as from September quarter 1996. See page 2, "Coverage update".

TABLE 7 — HOTELS, MOTELS AND GUEST HOUSES WITH FACILITIES BY STATISTICAL DIVISION,
TASMANIA (a)

| Particulars | Greater Hobart (SD) | | | Southern (SD) | | | Northern (SD) | | |
|---|---------------------------------|-------------------------|---------|---------------------------------|-------------------------|--------|---------------------------------|-------------------------|---------|
| | Licensed hotels with facilities | Motels and guest houses | Total | Licensed hotels with facilities | Motels and guest houses | Total | Licensed hotels with facilities | Motels and guest houses | Total |
| ESTABLISHMENTS, CAPACITY AND EMPLOYMENT | | | | | | | | | |
| March quarter 1996— | | | | | | | | | |
| Establishments | 23 | 27 | 50 | 14 | 9 | 23 | 32 | 24 | 56 |
| Guest rooms | 1,224 | 662 | 1,886 | 478 | 133 | 611 | 1,142 | 467 | 1,609 |
| Bed spaces | 3,169 | 2,032 | 5,201 | 1,431 | 523 | 1,954 | 3,317 | 1,523 | 4,840 |
| Employment (persons) | 1,583 | 313 | 1,896 | 259 | 90 | 349 | 1,263 | 146 | 1,409 |
| March quarter 1997— | | | | | | | | | |
| Establishments | 24 | 31 | 55 | 13 | 12 | 25 | 32 | 26 | 58 |
| Guest rooms | 1,225 | 687 | 1,912 | 378 | 233 | 611 | 1,153 | 482 | 1,635 |
| Bed spaces | 3,162 | 2,104 | 5,266 | 1,219 | 766 | 1,985 | 3,318 | 1,568 | 4,886 |
| Employment (persons) | 1,676 | 335 | 2,011 | 236 | 104 | 340 | 1,232 | 160 | 1,392 |
| ROOM NIGHTS OCCUPIED | | | | | | | | | |
| March quarter 1996 | 84,099 | 47,096 | 131,195 | 24,028 | 9,182 | 33,210 | 65,902 | 28,348 | 94,250 |
| 1997— | | | | | | | | | |
| January | 24,083 | 14,908 | 38,991 | 6,363 | 3,797 | 10,160 | 17,954 | 7,979 | 25,933 |
| February | 25,109 | 14,796 | 39,905 | 5,879 | 3,343 | 9,222 | 20,470 | 9,266 | 29,736 |
| March | 28,766 | 16,056 | 44,822 | 6,645 | 3,835 | 10,480 | 23,522 | 10,549 | 34,071 |
| March quarter 1997 | 77,958 | 45,760 | 123,718 | 18,887 | 10,975 | 29,862 | 61,946 | 27,794 | 89,740 |
| ROOM OCCUPANCY RATES (per cent) | | | | | | | | | |
| March quarter 1996 | 75.5 | 78.2 | 76.4 | 55.2 | 75.9 | 59.7 | 63.4 | 66.7 | 64.4 |
| 1997— | | | | | | | | | |
| January | 63.4 | 70.0 | 65.8 | 54.3 | 52.6 | 53.6 | 50.2 | 53.4 | 51.2 |
| February | 73.2 | 76.9 | 74.5 | 55.5 | 51.2 | 53.9 | 63.4 | 68.7 | 65.0 |
| March | 75.7 | 75.4 | 75.6 | 56.7 | 53.1 | 55.3 | 65.8 | 70.6 | 67.2 |
| March quarter 1997 | 70.7 | 74.0 | 71.9 | 55.5 | 52.3 | 54.3 | 59.7 | 64.1 | 61.0 |
| GUEST NIGHTS | | | | | | | | | |
| March quarter 1996 | 143,175 | 88,753 | 231,928 | 50,449 | 21,382 | 71,831 | 114,234 | 53,823 | 168,057 |
| 1997— | | | | | | | | | |
| January | 42,835 | 30,603 | 73,438 | 14,220 | 9,173 | 23,393 | 33,363 | 16,308 | 49,671 |
| February | 41,158 | 27,188 | 68,346 | 11,536 | 6,718 | 18,254 | 34,791 | 17,193 | 51,984 |
| March | 46,455 | 29,958 | 76,413 | 13,398 | 7,938 | 21,336 | 39,290 | 19,648 | 58,938 |
| March quarter 1997 | 130,448 | 87,749 | 218,197 | 39,154 | 23,829 | 62,983 | 107,444 | 53,149 | 160,593 |
| BED OCCUPANCY RATES (per cent) | | | | | | | | | |
| March quarter 1996 | 49.6 | 48.0 | 49.0 | 38.7 | 44.9 | 40.4 | 37.8 | 38.8 | 38.2 |
| 1997— | | | | | | | | | |
| January | 43.7 | 46.9 | 45.0 | 37.6 | 38.6 | 38.0 | 32.4 | 33.6 | 32.8 |
| February | 46.5 | 46.2 | 46.4 | 33.8 | 31.3 | 32.8 | 37.4 | 39.2 | 38.0 |
| March | 47.4 | 45.9 | 46.8 | 35.5 | 33.4 | 34.7 | 38.2 | 40.4 | 38.9 |
| March quarter 1997 | 45.8 | 46.3 | 46.0 | 35.7 | 34.6 | 35.3 | 36.0 | 37.7 | 36.5 |
| GUEST ARRIVALS | | | | | | | | | |
| March quarter 1996 | 55,811 | 42,755 | 98,566 | 40,947 | 13,287 | 54,234 | 60,395 | 32,273 | 92,668 |
| 1997— | | | | | | | | | |
| January | 16,062 | 14,280 | 30,342 | 10,881 | 5,281 | 16,162 | 17,703 | 10,582 | 28,285 |
| February | 16,894 | 13,238 | 30,132 | 9,566 | 4,529 | 14,095 | 18,884 | 10,929 | 29,813 |
| March | 18,374 | 13,610 | 31,984 | 11,026 | 5,439 | 16,465 | 22,044 | 12,194 | 34,238 |
| March quarter 1997 | 51,330 | 41,128 | 92,458 | 31,473 | 15,249 | 46,722 | 58,631 | 33,705 | 92,336 |
| AVERAGE LENGTH OF STAY (days) | | | | | | | | | |
| March quarter 1996 | 2.6 | 2.1 | 2.4 | 1.2 | 1.6 | 1.3 | 1.9 | 1.7 | 1.8 |
| March quarter 1997 | 2.5 | 2.1 | 2.4 | 1.2 | 1.6 | 1.3 | 1.8 | 1.6 | 1.7 |
| TAKINGS FROM ACCOMMODATION (\$'000) | | | | | | | | | |
| March quarter 1996 | 7,931 | 3,103 | 11,034 | 1,596 | 1,061 | 2,657 | 5,131 | 1,743 | 6,874 |
| 1997— | | | | | | | | | |
| January | 2,386 | 1,059 | 3,445 | 450 | 435 | 885 | 1,433 | 543 | 1,977 |
| February | 2,429 | 1,000 | 3,429 | 372 | 350 | 722 | 1,701 | 636 | 2,337 |
| March | 2,786 | 1,035 | 3,822 | 431 | 408 | 839 | 1,878 | 692 | 2,570 |
| March quarter 1997 | 7,601 | 3,095 | 10,695 | 1,252 | 1,194 | 2,446 | 5,012 | 1,872 | 6,884 |

TABLE 7 — HOTELS, MOTELS AND GUEST HOUSES WITH FACILITIES BY STATISTICAL DIVISION,
TASMANIA (a)—continued

| Particulars | Mersey-Lyell (SD) | | | Total Tasmania | | East Coast (b) | |
|---|---------------------------------|-------------------------|---------|---------------------------------|-------------------------|----------------|--------|
| | Licensed hotels with facilities | Motels and guest houses | Total | Licensed hotels with facilities | Motels and guest houses | Total | Total |
| ESTABLISHMENTS, CAPACITY AND EMPLOYMENT | | | | | | | |
| March quarter 1996— | | | | | | | |
| Establishments | 23 | 28 | 51 | 92 | 88 | 180 | 14 |
| Guest rooms | 736 | 678 | 1,414 | 3,580 | 1,940 | 5,520 | 485 |
| Bed spaces | 2,007 | 1,997 | 4,004 | 9,924 | 6,075 | 15,999 | 1,606 |
| Employment (persons) | 554 | 335 | 889 | 3,659 | 884 | 4,543 | 292 |
| March quarter 1997— | | | | | | | |
| Establishments | 22 | 29 | 51 | 91 | 98 | 189 | 17 |
| Guest rooms | 742 | 711 | 1,453 | 3,498 | 2,113 | 5,611 | 508 |
| Bed spaces | 2,034 | 2,056 | 4,090 | 9,733 | 6,494 | 16,227 | 1,706 |
| Employment (persons) | 511 | 354 | 865 | 3,655 | 953 | 4,608 | 292 |
| ROOM NIGHTS OCCUPIED | | | | | | | |
| March quarter 1996 | 37,737 | 40,814 | 78,551 | 211,766 | 125,440 | 337,206 | 25,511 |
| 1997— | | | | | | | |
| January | 9,800 | 12,455 | 22,255 | 58,200 | 39,139 | 97,339 | 8,650 |
| February | 10,638 | 13,288 | 23,926 | 62,096 | 40,693 | 102,789 | 7,839 |
| March | 12,658 | 15,339 | 27,997 | 71,591 | 45,779 | 117,370 | 9,040 |
| March quarter 1997 | 33,096 | 41,082 | 74,178 | 191,887 | 125,611 | 317,498 | 25,529 |
| ROOM OCCUPANCY RATES (per cent) | | | | | | | |
| March quarter 1996 | 56.3 | 66.2 | 61.0 | 65.0 | 71.1 | 67.1 | 57.8 |
| 1997— | | | | | | | |
| January | 42.6 | 56.5 | 49.4 | 53.7 | 59.8 | 56.0 | 54.9 |
| February | 51.2 | 66.7 | 58.8 | 63.4 | 68.8 | 65.4 | 55.1 |
| March | 55.0 | 69.6 | 62.2 | 66.0 | 69.9 | 67.5 | 57.4 |
| March quarter 1997 | 49.6 | 64.2 | 56.7 | 61.0 | 66.1 | 62.9 | 55.8 |
| GUEST NIGHTS | | | | | | | |
| March quarter 1996 | 63,560 | 73,437 | 136,997 | 371,418 | 237,395 | 608,813 | 54,140 |
| 1997— | | | | | | | |
| January | 17,333 | 24,654 | 41,987 | 107,751 | 80,738 | 188,489 | 20,195 |
| February | 19,751 | 22,819 | 42,570 | 107,236 | 73,918 | 181,154 | 15,693 |
| March | 21,156 | 27,425 | 48,581 | 120,299 | 84,969 | 205,268 | 18,702 |
| March quarter 1997 | 58,240 | 74,898 | 133,138 | 335,286 | 239,625 | 574,911 | 54,590 |
| BED OCCUPANCY RATES (per cent) | | | | | | | |
| March quarter 1996 | 34.8 | 40.4 | 37.6 | 41.1 | 42.9 | 41.8 | 37.0 |
| 1997— | | | | | | | |
| January | 27.5 | 38.7 | 33.1 | 35.7 | 40.1 | 37.5 | 38.2 |
| February | 34.7 | 39.6 | 37.2 | 39.3 | 40.7 | 39.9 | 32.9 |
| March | 33.6 | 43.0 | 38.3 | 39.9 | 42.2 | 40.8 | 35.4 |
| March quarter 1997 | 31.8 | 40.5 | 36.2 | 38.3 | 41.0 | 39.4 | 35.6 |
| GUEST ARRIVALS | | | | | | | |
| March quarter 1996 | 44,842 | 50,785 | 95,627 | 201,995 | 139,100 | 341,095 | 38,944 |
| 1997— | | | | | | | |
| January | 11,842 | 16,461 | 28,303 | 56,488 | 46,604 | 103,092 | 13,770 |
| February | 13,705 | 15,222 | 28,927 | 59,049 | 43,918 | 102,967 | 12,031 |
| March | 15,013 | 18,874 | 33,887 | 66,457 | 50,117 | 116,574 | 14,716 |
| March quarter 1997 | 40,560 | 50,557 | 91,117 | 181,994 | 140,639 | 322,633 | 40,517 |
| AVERAGE LENGTH OF STAY (days) | | | | | | | |
| March quarter 1996 | 1.4 | 1.4 | 1.4 | 1.8 | 1.7 | 1.8 | 1.4 |
| March quarter 1997 | 1.4 | 1.5 | 1.5 | 1.8 | 1.7 | 1.8 | 1.3 |
| TAKINGS FROM ACCOMMODATION (\$'000) | | | | | | | |
| March quarter 1996 | 2,837 | 2,863 | 5,701 | 17,496 | 8,771 | 26,267 | 2,037 |
| 1997— | | | | | | | |
| January | 814 | 1,015 | 1,829 | 5,083 | 3,053 | 8,135 | 744 |
| February | 843 | 1,021 | 1,864 | 5,345 | 3,007 | 8,352 | 609 |
| March | 968 | 1,164 | 2,131 | 6,062 | 3,300 | 9,362 | 724 |
| March quarter 1997 | 2,624 | 3,200 | 5,824 | 16,489 | 9,360 | 25,850 | 2,077 |

(a) Coverage breaks in series occurred as from September quarter 1996. See page 2, "Coverage update". (b) The East Coast Tourist Area comprises Glamorgan/Spring Bay (M) and Break O'Day (M).

TABLE 8—HOTELS, MOTELS AND GUEST HOUSES WITH FACILITIES: STATISTICAL DIVISIONS

| Statistical Divisions and selected Statistical Local Areas | Establish- ments | Guest rooms | Bed spaces | Employ- ment (persons) | Room nights occupied | | | | Room occupancy rates (per cent) | | | |
|---|---------------------|----------------|---------------|------------------------------|----------------------|---------|---------|-------------|---------------------------------|------|------|-------------|
| | | | | | Jan. | Feb. | Mar. | Mar. qtr | Jan. | Feb. | Mar. | Mar. qtr |
| Clarence (C) | 5 | 60 | 157 | 90 | 1,023 | 1,086 | 1,160 | 3,269 | 55.0 | 64.6 | 62.4 | 60.5 |
| Glenorchy (C) | 7 | 169 | 432 | 119 | 3,268 | 3,425 | 3,613 | 10,306 | 62.4 | 72.4 | 69.0 | 67.8 |
| Hobart (C) | | | | | | | | | | | | |
| Inner | 6 | 429 | 1,054 | 229 | 7,382 | 9,132 | 10,476 | 26,990 | 55.5 | 76.0 | 78.8 | 69.9 |
| Remainder | 31 | 1,175 | 3,404 | 1,513 | 26,362 | 25,252 | 28,325 | 79,939 | 72.4 | 76.8 | 77.8 | 75.6 |
| Total | 37 | 1,604 | 4,458 | 1,742 | 33,744 | 34,384 | 38,801 | 106,929 | 67.9 | 76.6 | 78.0 | 74.1 |
| Balance | 6 | 79 | 219 | 60 | 956 | 1,010 | 1,248 | 3,214 | 39.0 | 45.7 | 51.0 | 45.2 |
| Greater Hobart (SD) | 55 | 1,912 | 5,266 | 2,011 | 38,991 | 39,905 | 44,822 | 123,718 | 65.8 | 74.5 | 75.6 | 71.9 |
| Glamorgan/Spring Bay (M) | 11 | 330 | 1,244 | 190 | 6,502 | 5,742 | 6,374 | 18,618 | 63.6 | 62.1 | 62.3 | 62.7 |
| Tasman (M) | 6 | 136 | 400 | 84 | 2,050 | 2,048 | 2,603 | 6,701 | 48.6 | 53.8 | 61.7 | 54.7 |
| Balance | 8 | 145 | 341 | 66 | 1,608 | 1,432 | 1,503 | 4,543 | 35.8 | 35.3 | 33.4 | 34.8 |
| Southern (SD) | 25 | 611 | 1,985 | 340 | 10,160 | 9,222 | 10,480 | 29,862 | 53.6 | 53.9 | 55.3 | 54.3 |
| Break O'Day (M) | 6 | 178 | 462 | 102 | 2,148 | 2,097 | 2,666 | 6,911 | 38.9 | 42.1 | 48.3 | 43.1 |
| Launceston (C) | | | | | | | | | | | | |
| Inner | 9 | 470 | 1,290 | 340 | 7,769 | 9,259 | 10,636 | 27,664 | 53.3 | 70.4 | 73.0 | 65.4 |
| Parts B & C | 24 | 621 | 2,017 | 299 | 10,067 | 11,927 | 13,551 | 35,545 | 52.3 | 68.6 | 70.4 | 63.6 |
| Total | 33 | 1,091 | 3,307 | 639 | 17,836 | 21,186 | 24,187 | 63,209 | 52.7 | 69.4 | 71.5 | 64.4 |
| Northern Midlands (M)—Pts A & B | 3 | 25 | 67 | 22 | 408 | 410 | 486 | 1,304 | 52.6 | 58.6 | 62.7 | 58.0 |
| West Tamar (M)—Pts A & B | 7 | 124 | 387 | 118 | 1,460 | 1,703 | 1,773 | 4,936 | 38.0 | 49.0 | 46.1 | 44.2 |
| Balance | 9 | 217 | 663 | 511 | 4,081 | 4,340 | 4,959 | 13,380 | 60.7 | 71.4 | 73.7 | 68.5 |
| Northern (SD) | 58 | 1,635 | 4,886 | 1,392 | 25,933 | 29,736 | 34,071 | 89,740 | 51.2 | 65.0 | 67.2 | 61.0 |
| Burnie (C)—Pts A & B | 8 | 237 | 581 | 130 | 2,927 | 3,387 | 3,828 | 10,142 | 39.8 | 51.0 | 52.1 | 47.5 |
| Central Coast (M)—Pts A & B | 5 | 115 | 289 | 82 | 1,172 | 1,638 | 1,472 | 4,282 | 32.9 | 50.9 | 41.3 | 41.4 |
| Circular Head (M) | 3 | 121 | 329 | 69 | 1,326 | 1,666 | 2,078 | 5,070 | 35.4 | 49.2 | 55.4 | 46.6 |
| Devonport (C) | 9 | 242 | 667 | 128 | 3,633 | 4,074 | 4,460 | 12,167 | 48.4 | 60.1 | 59.5 | 55.9 |
| Waratah/Wynyard (M)—Pts A & B | 7 | 117 | 311 | 70 | 1,561 | 1,551 | 1,911 | 5,023 | 43.0 | 47.3 | 52.7 | 47.7 |
| West Coast (M) | 11 | 427 | 1,213 | 216 | 7,199 | 7,144 | 9,054 | 23,397 | 54.4 | 59.8 | 68.4 | 60.9 |
| Balance | 8 | 194 | 700 | 170 | 4,437 | 4,466 | 5,194 | 14,097 | 73.8 | 82.2 | 86.4 | 80.7 |
| Mersey-Lyell (SD) | 51 | 1,453 | 4,090 | 865 | 22,255 | 23,926 | 27,997 | 74,178 | 49.4 | 58.8 | 62.2 | 56.7 |
| Total Tasmania | 189 | 5,611 | 16,227 | 4,608 | 97,339 | 102,789 | 117,370 | 317,498 | 56.0 | 65.4 | 67.5 | 62.9 |

AND SELECTED STATISTICAL LOCAL AREAS, TASMANIA, MARCH QUARTER 1997

| <i>Guest nights</i> | | | | <i>Guest arrivals</i> | | | | <i>Takings from accommodation (\$'000)</i> | | | |
|---------------------|-------------|-------------|---------------------|-----------------------|-------------|-------------|---------------------|--|-------------|-------------|---------------------|
| <i>Jan.</i> | <i>Feb.</i> | <i>Mar.</i> | <i>Mar. qtr</i> | <i>Jan.</i> | <i>Feb.</i> | <i>Mar.</i> | <i>Mar. qtr</i> | <i>Jan.</i> | <i>Feb.</i> | <i>Mar.</i> | <i>Mar. qtr</i> |
| 2,234 | 2,083 | 2,280 | 6,597 | 969 | 964 | 1,027 | 2,960 | 74 | 79 | 83 | 237 |
| 6,077 | 5,889 | 6,404 | 18,370 | 2,784 | 2,837 | 2,832 | 8,453 | 169 | 174 | 186 | 530 |
| 13,301 | 14,813 | 17,338 | 45,452 | 6,141 | 6,938 | 7,672 | 20,751 | 584 | 720 | 776 | 2,080 |
| 49,896 | 43,523 | 48,045 | 141,464 | 19,239 | 18,054 | 19,078 | 56,371 | 2,560 | 2,389 | 2,697 | 7,647 |
| 63,197 | 58,336 | 65,383 | 186,916 | 25,380 | 24,992 | 26,750 | 77,122 | 3,144 | 3,109 | 3,473 | 9,727 |
| 1,930 | 2,038 | 2,346 | 6,314 | 1,209 | 1,339 | 1,375 | 3,923 | 57 | 66 | 79 | 202 |
| 73,438 | 68,346 | 76,413 | 218,197 | 30,342 | 30,132 | 31,984 | 92,458 | 3,445 | 3,429 | 3,822 | 10,695 |
| 15,805 | 11,806 | 13,663 | 41,274 | 10,224 | 8,934 | 10,229 | 29,387 | 620 | 490 | 561 | 1,671 |
| 4,759 | 4,016 | 5,185 | 13,960 | 3,945 | 3,493 | 4,489 | 11,927 | 168 | 145 | 198 | 511 |
| 2,829 | 2,432 | 2,488 | 7,749 | 1,993 | 1,668 | 1,747 | 5,408 | 98 | 87 | 80 | 265 |
| 23,393 | 18,254 | 21,336 | 62,983 | 16,162 | 14,095 | 16,465 | 46,722 | 885 | 722 | 839 | 2,446 |
| 4,390 | 3,887 | 5,039 | 13,316 | 3,546 | 3,097 | 4,487 | 11,130 | 124 | 119 | 163 | 406 |
| 13,011 | 15,431 | 16,613 | 45,055 | 6,803 | 7,718 | 8,780 | 23,301 | 635 | 825 | 869 | 2,329 |
| 21,185 | 21,935 | 25,277 | 68,397 | 12,815 | 13,200 | 14,509 | 40,524 | 714 | 857 | 934 | 2,505 |
| 34,196 | 37,366 | 41,890 | 113,452 | 19,618 | 20,918 | 23,289 | 63,825 | 1,349 | 1,682 | 1,803 | 4,834 |
| 697 | 602 | 702 | 2,001 | 277 | 354 | 461 | 1,092 | 21 | 19 | 23 | 63 |
| 2,721 | 2,968 | 3,005 | 8,694 | 1,518 | 1,905 | 1,912 | 5,335 | 93 | 89 | 97 | 279 |
| 7,667 | 7,161 | 8,302 | 23,130 | 3,326 | 3,539 | 4,089 | 10,954 | 390 | 429 | 484 | 1,303 |
| 49,671 | 51,984 | 58,938 | 160,593 | 28,285 | 29,813 | 34,238 | 92,336 | 1,977 | 2,337 | 2,570 | 6,884 |
| 4,148 | 5,713 | 5,553 | 15,414 | 2,603 | 3,811 | 3,701 | 10,115 | 183 | 230 | 251 | 663 |
| 1,972 | 2,271 | 2,124 | 6,367 | 1,216 | 1,512 | 1,449 | 4,177 | 64 | 84 | 94 | 242 |
| 2,601 | 3,329 | 3,735 | 9,665 | 1,833 | 2,395 | 2,813 | 7,041 | 89 | 108 | 115 | 312 |
| 6,307 | 6,317 | 7,078 | 19,702 | 4,465 | 4,426 | 5,001 | 13,892 | 256 | 273 | 298 | 827 |
| 3,439 | 3,065 | 3,670 | 10,174 | 2,438 | 2,317 | 2,563 | 7,318 | 111 | 99 | 116 | 326 |
| 13,588 | 13,027 | 15,885 | 42,500 | 9,929 | 9,076 | 12,024 | 31,029 | 553 | 509 | 630 | 1,692 |
| 9,932 | 8,848 | 10,536 | 29,316 | 5,819 | 5,390 | 6,336 | 17,545 | 572 | 561 | 628 | 1,761 |
| 41,987 | 42,570 | 48,581 | 133,138 | 28,303 | 28,927 | 33,887 | 91,117 | 1,829 | 1,864 | 2,131 | 5,824 |
| 188,489 | 181,154 | 205,268 | 574,911 | 103,092 | 102,967 | 116,574 | 322,633 | 8,135 | 8,352 | 9,362 | 25,850 |

TABLE 9 — HOLIDAY FLATS, UNITS AND HOUSES BY STATISTICAL DIVISION AND SELECTED STATISTICAL AREAS, TASMANIA (a)

| Particulars | Northern (SD) | | | | Total | Mersey-Lyell (SD) | Total Tasmania | East Coast (h) |
|---|---------------------|---------------|---|---------------------|--------|-------------------|----------------|----------------|
| | Greater Hobart (SD) | Southern (SD) | Greater Launceston and Central North (SSDs) | North Eastern (SSD) | | | | |
| LETTING ENTITIES, CAPACITY AND EMPLOYMENT | | | | | | | | |
| March quarter 1996— Letting entities | 13 | 9 | 11 | 7 | 18 | 14 | 54 | 11 |
| Flats, units and houses | | | | | | | | |
| Single bedroom | 50 | 21 | 93 | 29 | 122 | 42 | 235 | 40 |
| Multiple bedroom | 183 | 80 | 139 | 72 | 211 | 121 | 595 | 96 |
| Total flats, units and houses | 233 | 101 | 232 | 101 | 333 | 163 | 830 | 136 |
| Bed spaces | 1,042 | 507 | 898 | 473 | 1,371 | 737 | 3,657 | 627 |
| Employment (persons) | 72 | 46 | 154 | 30 | 184 | 54 | 356 | 49 |
| March quarter 1997— Letting entities | 13 | 11 | 11 | 7 | 18 | 15 | 57 | 13 |
| Flats, units and houses | | | | | | | | |
| Single bedroom | 48 | 21 | 91 | 28 | 119 | 53 | 241 | 39 |
| Multiple bedroom | 186 | 93 | 141 | 72 | 213 | 129 | 621 | 110 |
| Total flats, units and houses | 234 | 114 | 232 | 100 | 332 | 182 | 862 | 149 |
| Bed spaces | 1,031 | 573 | 901 | 470 | 1,371 | 822 | 3,797 | 700 |
| Employment (persons) | 73 | 52 | 136 | 28 | 164 | 60 | 349 | 54 |
| UNIT NIGHTS OCCUPIED | | | | | | | | |
| March quarter 1996 | 16,132 | 6,882 | 11,860 | 4,659 | 16,519 | 8,979 | 48,512 | 7,227 |
| 1997— | | | | | | | | |
| January | 5,947 | 2,825 | 3,959 | 2,215 | 6,174 | 3,712 | 18,658 | 3,274 |
| February | 4,938 | 2,192 | 3,323 | 1,382 | 4,705 | 3,274 | 15,109 | 2,390 |
| March | 5,440 | 2,364 | 3,949 | 1,488 | 5,437 | 3,790 | 17,031 | 2,684 |
| March quarter 1997 | 16,325 | 7,381 | 11,231 | 5,085 | 16,316 | 10,776 | 50,798 | 8,348 |
| UNIT OCCUPANCY RATES (per cent) | | | | | | | | |
| March quarter 1996 | 76.1 | 74.9 | 56.2 | 50.7 | 54.5 | 60.5 | 64.2 | 58.4 |
| 1997— | | | | | | | | |
| January | 82.0 | 79.9 | 55.0 | 71.5 | 60.0 | 65.8 | 69.8 | 70.9 |
| February | 75.4 | 68.7 | 51.2 | 49.4 | 50.6 | 64.2 | 62.6 | 57.3 |
| March | 75.0 | 66.9 | 54.9 | 48.0 | 52.8 | 67.2 | 63.7 | 58.1 |
| March quarter 1997 | 77.5 | 71.9 | 53.8 | 56.5 | 54.6 | 65.8 | 65.5 | 62.3 |
| UNIT LETTINGS | | | | | | | | |
| March quarter 1996 | 5,819 | 4,317 | 6,897 | 1,804 | 8,701 | 4,964 | 23,801 | 3,823 |
| 1997— | | | | | | | | |
| January | 1,838 | 1,581 | 2,189 | 832 | 3,021 | 2,016 | 8,456 | 1,572 |
| February | 1,671 | 1,406 | 1,953 | 612 | 2,565 | 1,700 | 7,342 | 1,364 |
| March | 1,914 | 1,605 | 2,229 | 604 | 2,833 | 2,039 | 8,391 | 1,563 |
| March quarter 1997 | 5,423 | 4,592 | 6,371 | 2,048 | 8,419 | 5,755 | 24,189 | 4,499 |
| AVERAGE LENGTH OF STAY (days) | | | | | | | | |
| March quarter 1996 | 2.8 | 1.6 | 1.7 | 2.6 | 1.9 | 1.8 | 2.0 | 1.9 |
| 1997— | | | | | | | | |
| January | 3.2 | 1.8 | 1.8 | 2.7 | 2.0 | 1.8 | 2.2 | 2.1 |
| February | 3.0 | 1.6 | 1.7 | 2.3 | 1.8 | 1.9 | 2.1 | 1.8 |
| March | 2.8 | 1.5 | 1.8 | 2.5 | 1.9 | 1.9 | 2.0 | 1.7 |
| March quarter 1997 | 3.0 | 1.6 | 1.8 | 2.5 | 1.9 | 1.9 | 2.1 | 1.9 |
| TAKINGS FROM ACCOMMODATION (\$'000) | | | | | | | | |
| March quarter 1996 | 1,297 | 632 | 1,066 | 260 | 1,326 | 580 | 3,835 | 593 |
| 1997— | | | | | | | | |
| January | 512 | 283 | 385 | 121 | 506 | 250 | 1,550 | 288 |
| February | 371 | 195 | 292 | 76 | 368 | 216 | 1,150 | 200 |
| March | 401 | 199 | 358 | 68 | 425 | 236 | 1,262 | 195 |
| March quarter 1997 | 1,283 | 677 | 1,035 | 264 | 1,299 | 702 | 3,961 | 684 |

(a) Coverage breaks in series occurred as from September quarter 1996. See page 2, "Coverage update". (b) The East Coast Tourist Area comprises Glamorgan/Spring Bay (M) and Break O'Day (M).

TABLE 10 — CARAVAN PARKS BY STATISTICAL DIVISION AND SELECTED STATISTICAL AREAS, TASMANIA

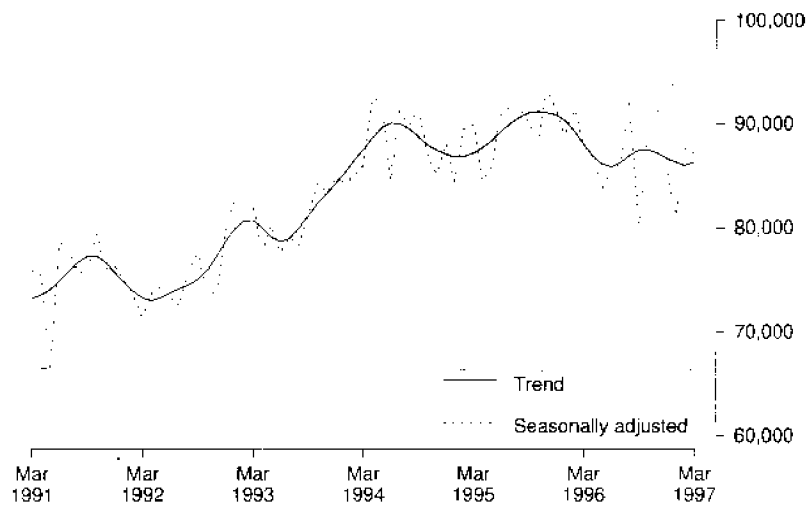
| Particulars | Northern (SD) | | | | | Mersey-Lyell (SD) | Total Tasmania | East Coast (a) |
|---|---------------------|---------------|---|---------------------|--------|-------------------|----------------|----------------|
| | Greater Hobart (SD) | Southern (SD) | Greater Launceston and Central North (SSDs) | North Eastern (SSD) | Total | | | |
| ESTABLISHMENTS, CAPACITY AND EMPLOYMENT | | | | | | | | |
| March quarter 1996 | | | | | | | | |
| Establishments | 7 | 18 | 12 | 8 | 20 | 27 | 72 | 11 |
| Capacity | | | | | | | | |
| On-site vans | 63 | 67 | 51 | 23 | 74 | 162 | 366 | 52 |
| Other powered sites | 268 | 800 | 478 | 504 | 982 | 1,503 | 3,553 | 667 |
| Unpowered sites | 258 | 358 | 307 | 556 | 863 | 640 | 2,119 | 505 |
| Cabins, flats, etc. | 65 | 146 | 83 | 20 | 103 | 172 | 486 | 87 |
| Total capacity | 654 | 1,371 | 919 | 1,103 | 2,022 | 2,477 | 6,524 | 1,311 |
| Sites occupied by long-term guests | 53 | 27 | 74 | 10 | 84 | 258 | 422 | 31 |
| Other sites permanently reserved | 9 | 358 | 105 | 299 | 404 | 326 | 1,097 | 373 |
| Employment (persons) | 32 | 86 | 43 | 25 | 68 | 87 | 273 | 58 |
| March quarter 1997— | | | | | | | | |
| Establishments | 7 | 18 | 12 | 8 | 20 | 28 | 73 | 11 |
| Capacity | | | | | | | | |
| On-site vans | 63 | 63 | 52 | 22 | 74 | 165 | 365 | 52 |
| Other powered sites | 259 | 774 | 485 | 532 | 1,017 | 1,541 | 3,591 | 661 |
| Unpowered sites | 258 | 368 | 312 | 538 | 850 | 631 | 2,107 | 513 |
| Cabins, flats, etc. | 67 | 143 | 80 | 20 | 100 | 195 | 505 | 90 |
| Total capacity | 647 | 1,348 | 929 | 1,112 | 2,041 | 2,532 | 6,568 | 1,316 |
| Sites occupied by long-term guests | 71 | 16 | 78 | 15 | 93 | 248 | 428 | 25 |
| Other sites permanently reserved | 7 | 347 | 109 | 311 | 420 | 343 | 1,117 | 376 |
| Employment (persons) | 38 | 91 | 40 | 25 | 65 | 100 | 294 | 55 |
| SITE NIGHTS OCCUPIED | | | | | | | | |
| March quarter 1996 | 21,508 | 62,258 | 32,404 | 38,474 | 70,878 | 95,212 | 249,856 | 54,552 |
| 1997— | | | | | | | | |
| January | 8,294 | 24,624 | 11,337 | 17,379 | 28,716 | 39,645 | 101,279 | 21,332 |
| February | 6,421 | 17,869 | 9,812 | 10,740 | 20,552 | 30,773 | 75,615 | 15,701 |
| March | 9,125 | 19,832 | 11,277 | 11,802 | 23,079 | 30,121 | 82,157 | 17,925 |
| March quarter 1997 | 23,840 | 62,325 | 32,426 | 39,921 | 72,347 | 100,539 | 259,051 | 54,958 |
| SITE OCCUPANCY RATES (per cent) | | | | | | | | |
| March quarter 1996 | 36.1 | 49.9 | 38.7 | 38.3 | 38.5 | 42.2 | 42.1 | 45.7 |
| 1997— | | | | | | | | |
| January | 41.4 | 58.9 | 39.4 | 50.4 | 45.4 | 50.5 | 49.7 | 52.3 |
| February | 35.4 | 47.3 | 37.7 | 34.5 | 36.0 | 43.4 | 41.1 | 42.6 |
| March | 45.5 | 47.5 | 39.2 | 34.2 | 36.5 | 38.4 | 40.4 | 43.9 |
| March quarter 1997 | 40.9 | 51.4 | 38.8 | 39.9 | 39.4 | 44.1 | 43.8 | 46.4 |
| TAKINGS FROM ACCOMMODATION (\$'000) | | | | | | | | |
| March quarter 1996 | 507 | 845 | 461 | 221 | 683 | 1,091 | 3,126 | 601 |
| 1997— | | | | | | | | |
| January | 166 | 372 | 162 | 130 | 292 | 473 | 1,304 | 262 |
| February | 162 | 250 | 133 | 62 | 195 | 346 | 953 | 164 |
| March | 158 | 245 | 154 | 68 | 222 | 317 | 941 | 169 |
| March quarter 1997 | 486 | 867 | 448 | 261 | 709 | 1,136 | 3,199 | 596 |

(a) The East Coast Tourist Area comprises Glamorgan/Spring Bay (M) and Break O'Day (M).

TABLE 11—HOTEL & MOTEL ETC. ROOM NIGHTS, HOLIDAY UNIT NIGHTS AND CARAVAN PARK SITE NIGHTS: SEASONALLY ADJUSTED AND TREND ESTIMATES

| Period | Hotel, motel etc. with facilities, room nights | | Holiday unit nights | | Caravan park site nights | |
|--------------|--|--------|---------------------|--------|--------------------------|--------|
| | Seasonally adjusted | Trend | Seasonally adjusted | Trend | Seasonally adjusted | Trend |
| 1995—March | 89,885 | 87,220 | 14,828 | 14,780 | 64,164 | 65,209 |
| April | 84,545 | 87,811 | 13,749 | 12,543 | 67,308 | 65,390 |
| May | 85,913 | 88,469 | 11,809 | 12,428 | 65,379 | 65,540 |
| June | 90,857 | 89,209 | 11,956 | 12,252 | 65,727 | 65,523 |
| July | 91,724 | 90,010 | 12,144 | 12,158 | 65,084 | 65,398 |
| August | 91,661 | 90,657 | 11,760 | 12,233 | 64,125 | 65,309 |
| September | 90,106 | 91,103 | 12,918 | 12,446 | 66,559 | 65,272 |
| October | 88,438 | 91,208 | 12,224 | 12,641 | 64,974 | 65,396 |
| November | 93,421 | 91,108 | 13,331 | 12,773 | 65,367 | 65,686 |
| December | 91,340 | 90,882 | 13,329 | 12,820 | 66,831 | 65,882 |
| 1996—January | 88,997 | 90,353 | 12,240 | 12,818 | 64,854 | 65,931 |
| February | 91,402 | 89,251 | 12,353 | 12,771 | 65,465 | 65,858 |
| March | 87,965 | 88,025 | 12,136 | 12,681 | 69,259 | 65,832 |
| April | 86,789 | 86,929 | 14,486 | 12,539 | 63,649 | 65,987 |
| May | 83,759 | 86,149 | 11,651 | 12,338 | 63,992 | 66,280 |
| June | 85,705 | 85,934 | 11,829 | 12,154 | 68,240 | 66,706 |
| July | 86,142 | 86,323 | 12,153 | 12,070 | 67,597 | 67,156 |
| August | 92,416 | 86,992 | 11,762 | 12,166 | 68,379 | 67,404 |
| September | 80,295 | 87,503 | 12,144 | 12,457 | 67,006 | 67,323 |
| October | 89,296 | 87,544 | 12,999 | 12,834 | 66,373 | 66,966 |
| November | 92,164 | 87,190 | 13,759 | 13,123 | 67,509 | 66,577 |
| December | 86,152 | 86,731 | 13,628 | 13,243 | 66,060 | 66,543 |
| 1997—January | 81,159 | 86,359 | 12,904 | 13,258 | 64,749 | 66,798 |
| February | 87,577 | 86,056 | 12,980 | 13,216 | 67,675 | 67,213 |
| March | 87,267 | 86,334 | 12,965 | 13,118 | 69,764 | 67,782 |

HOTEL/MOTEL ROOM NIGHTS



HOLIDAY UNIT NIGHTS

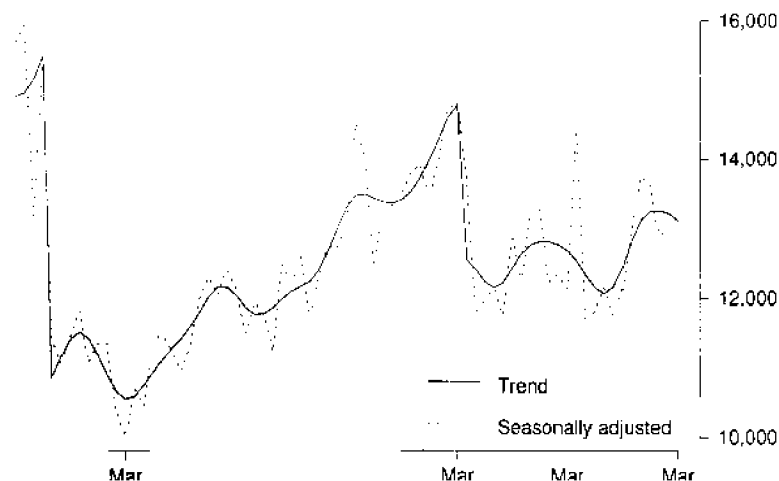


TABLE 12 — VISITOR HOSTELS BY STATISTICAL DIVISION, TASMANIA (a)

| <i>Particulars</i> | <i>Greater Hobart (SD)</i> | <i>Southern (SD)</i> | <i>Northern (SD)</i> | <i>Mersey-Lyell (SD)</i> | <i>Total Tasmania</i> |
|---|--------------------------------|--------------------------|--------------------------|------------------------------|---------------------------|
| ESTABLISHMENTS, CAPACITY AND EMPLOYMENT | | | | | |
| <i>March quarter 1996—</i> | | | | | |
| Establishments | 6 | 16 | 11 | 8 | 41 |
| Bed spaces | 321 | 532 | 332 | 542 | 1,727 |
| Employment (persons) | 30 | 39 | 19 | 24 | 112 |
| <i>March quarter 1997—</i> | | | | | |
| Establishments | 8 | 18 | 14 | 9 | 49 |
| Bed spaces | 471 | 612 | 447 | 656 | 2,186 |
| Employment (persons) | 50 | 43 | 34 | 29 | 156 |
| GUEST NIGHTS | | | | | |
| <i>March quarter 1996</i> | <i>14,803</i> | <i>15,059</i> | <i>5,220</i> | <i>13,073</i> | <i>48,155</i> |
| <i>1997—</i> | | | | | |
| January | 6,265 | 7,111 | 3,363 | 6,073 | 22,812 |
| February | 5,075 | 4,264 | 2,790 | 4,864 | 16,993 |
| March | 4,753 | 5,040 | 3,192 | 4,765 | 17,750 |
| <i>March quarter 1997</i> | <i>16,093</i> | <i>16,415</i> | <i>9,345</i> | <i>15,702</i> | <i>57,555</i> |
| BED OCCUPANCY RATES (per cent) | | | | | |
| <i>March quarter 1996</i> | <i>50.7</i> | <i>31.1</i> | <i>17.3</i> | <i>26.5</i> | <i>30.6</i> |
| <i>1997—</i> | | | | | |
| January | 42.9 | 37.5 | 24.3 | 29.9 | 33.7 |
| February | 38.5 | 26.3 | 22.3 | 26.5 | 28.2 |
| March | 32.6 | 28.0 | 23.0 | 23.4 | 26.6 |
| <i>March quarter 1997</i> | <i>38.0</i> | <i>30.9</i> | <i>23.2</i> | <i>26.6</i> | <i>29.5</i> |
| GUEST ARRIVALS | | | | | |
| <i>March quarter 1996</i> | <i>8,644</i> | <i>9,816</i> | <i>3,985</i> | <i>9,763</i> | <i>32,208</i> |
| <i>1997—</i> | | | | | |
| January | 3,676 | 4,187 | 1,997 | 4,109 | 13,969 |
| February | 2,940 | 2,760 | 1,971 | 3,414 | 11,085 |
| March | 2,639 | 3,023 | 2,232 | 3,267 | 11,161 |
| <i>March quarter 1997</i> | <i>9,255</i> | <i>9,970</i> | <i>6,200</i> | <i>10,790</i> | <i>36,215</i> |
| AVERAGE LENGTH OF STAY (days) | | | | | |
| <i>March quarter 1996</i> | <i>1.7</i> | <i>1.5</i> | <i>1.3</i> | <i>1.3</i> | <i>1.5</i> |
| <i>1997—</i> | | | | | |
| January | 1.7 | 1.7 | 1.7 | 1.5 | 1.6 |
| February | 1.7 | 1.5 | 1.4 | 1.4 | 1.5 |
| March | 1.8 | 1.7 | 1.4 | 1.5 | 1.6 |
| <i>March quarter 1997</i> | <i>1.7</i> | <i>1.6</i> | <i>1.5</i> | <i>1.5</i> | <i>1.6</i> |
| TAKINGS FROM ACCOMMODATION (\$'000) | | | | | |
| <i>March quarter 1996</i> | <i>184</i> | <i>183</i> | <i>54</i> | <i>158</i> | <i>580</i> |
| <i>1997—</i> | | | | | |
| January | 83 | 79 | 37 | 74 | 273 |
| February | 66 | 55 | 32 | 62 | 214 |
| March | 61 | 56 | 34 | 61 | 212 |
| <i>March quarter 1997</i> | <i>209</i> | <i>189</i> | <i>103</i> | <i>197</i> | <i>698</i> |

(a) Coverage breaks in series occurred as from September quarter 1996. See page 2, "Coverage update".

TABLE 13—PASSENGER ARRIVALS AND DEPARTURES, TASMANIA,
INTERSTATE AND INTERNATIONAL (a) (d)
(Source: Tourism Tasmania)

| Period | Arrivals | | | | Departures total (b) | Cruise ships (c) | |
|-----------------|-----------------------|--------------------------|---------|---------|-------------------------|------------------|------------|
| | By air— interstate | By air— international | By sea | Total | | Arrivals | Departures |
| 1989 | 449,481 | 8,489 | 118,646 | 576,616 | 591,152 | 4,149 | 4,149 |
| 1990 | 555,631 | 8,629 | 120,004 | 684,264 | 679,833 | 3,255 | 3,255 |
| 1991 | 625,366 | 5,897 | 131,375 | 762,638 | 764,731 | 6,720 | 6,663 |
| 1992 | 652,092 | 4,428 | 114,969 | 771,489 | 761,109 | 4,608 | 4,608 |
| 1993 | 694,244 | 5,144 | 115,381 | 814,769 | 814,835 | 2,033 | 2,033 |
| 1994 | 745,508 | 4,166 | 128,644 | 878,318 | 880,936 | 6,592 | 6,592 |
| 1995 | 811,784 | 3,982 | 116,869 | 932,635 | 931,278 | 6,199 | 6,199 |
| 1996 | 829,654 | 2,999 | 115,486 | 948,139 | 960,569 | 5,286 | 5,286 |
| 1994 - December | 78,749 | 419 | 13,433 | 92,601 | 79,187 | - | - |
| 1995— January | 80,818 | 318 | 12,430 | 93,566 | 115,126 | 1,368 | 1,368 |
| February | 78,700 | 269 | 11,704 | 90,673 | 81,727 | 1,772 | 1,772 |
| March | 68,790 | 351 | 13,087 | 82,228 | 86,348 | 659 | 659 |
| April | 66,840 | 423 | 9,584 | 76,847 | 83,918 | - | - |
| May | 53,364 | 277 | 8,368 | 62,009 | 70,563 | - | - |
| June | 57,146 | 211 | 7,678 | 65,035 | 62,555 | - | - |
| July | 56,761 | 294 | 5,793 | 62,848 | 59,312 | - | - |
| August | 58,124 | 240 | 4,027 | 62,391 | 65,381 | - | - |
| September | 73,105 | 407 | 11,150 | 84,662 | 72,559 | - | - |
| October | 65,079 | 346 | 10,889 | 76,314 | 75,628 | - | - |
| November | 68,990 | 394 | 10,187 | 79,571 | 77,855 | 810 | 810 |
| December | 84,067 | 452 | 11,972 | 96,491 | 80,306 | 1,590 | 1,590 |
| 1996— January | 83,246 | 384 | 12,756 | 96,386 | 114,160 | 2,806 | 2,806 |
| February | 74,239 | 377 | 10,926 | 85,542 | 79,106 | 1,630 | 1,630 |
| March | 71,858 | 503 | 10,998 | 83,359 | 89,056 | - | - |
| April | 72,146 | 355 | 9,652 | 82,153 | 84,390 | - | - |
| May | 60,990 | 182 | 4,861 | 66,033 | 78,425 | - | - |
| June | 63,351 | 120 | 5,417 | 68,888 | 66,010 | - | - |
| July | 56,537 | - | 7,550 | 64,087 | 68,288 | - | - |
| August | 56,695 | - | 7,952 | 64,647 | 66,400 | - | - |
| September | 74,597 | - | 11,257 | 85,854 | 75,490 | - | - |
| October | 68,956 | 352 | 10,073 | 79,381 | 79,774 | - | - |
| November | 68,037 | 431 | 11,341 | 79,809 | 78,803 | - | - |
| December | 79,002 | 295 | 12,703 | 92,000 | 80,667 | 850 | 850 |

(a) The following persons are not included in these statistics: passengers under three years of age accompanied by an adult; passengers travelling on chartered flights with minor carriers; passengers travelling on private or VIP flights.

(b) The proportion of departing passengers who were visitors was shown to be about 58% in the 1981 Tasmanian Visitor Survey (TVS), around 55% in the 1984 TVS, about 53% in the 1986 TVS, nearly 60% in the 1988 TVS, close to 65% in the 1990 TVS, almost 58% in the 1991 TVS, almost 55% in the 1992 TVS, just over 58% in the 1993 TVS and almost 60% in the 1994 TVS.

(c) Cruise ship statistics were not collected before November 1986 and are not included in Total Arrivals and Total Departures.

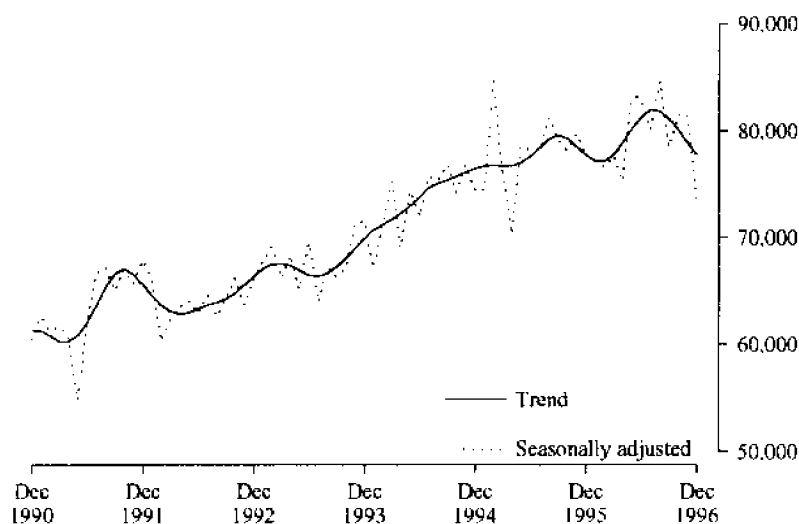
(d) The domestic airline pilots dispute commenced on 18 August 1989 with the pilots working restricted hours (9 a.m. to 5 p.m.). The pilots were suspended on 23 August 1989.

TABLE 14—TOTAL PASSENGER ARRIVALS BY AIR AND SEA INTO
TASMANIA:
SEASONALLY ADJUSTED AND TREND SERIES (a) (b)

| <i>Period</i> | <i>Original</i> | <i>Seasonally adjusted (a)</i> | <i>Trend</i> |
|----------------------|-----------------|------------------------------------|--------------|
| <i>Dec. 1990</i> | 73,421 | 60,378 | 61,354 |
| <i>1991</i> | 83,162 | 67,871 | 65,583 |
| <i>1992</i> | 82,262 | 66,172 | 66,397 |
| <i>1993</i> | 89,795 | 71,556 | 69,930 |
| <i>1994</i> | 92,601 | 74,350 | 76,496 |
| <i>1995</i> | 96,491 | 77,749 | 77,754 |
| <i>1996</i> | 92,000 | 73,496 | 77,759 |
| <i>1994—December</i> | 92,601 | 74,350 | 76,496 |
| <i>1995—January</i> | 93,566 | 74,470 | 76,709 |
| <i>February</i> | 90,673 | 84,724 | 76,756 |
| <i>March</i> | 82,228 | 76,099 | 76,695 |
| <i>April</i> | 76,847 | 70,362 | 76,747 |
| <i>May</i> | 62,009 | 78,554 | 77,022 |
| <i>June</i> | 65,035 | 78,183 | 77,636 |
| <i>July</i> | 62,848 | 78,173 | 78,455 |
| <i>August</i> | 62,391 | 81,276 | 79,256 |
| <i>September</i> | 84,662 | 79,187 | 79,598 |
| <i>October</i> | 76,314 | 78,183 | 79,265 |
| <i>November</i> | 79,571 | 79,734 | 78,526 |
| <i>December</i> | 96,491 | 77,749 | 77,754 |
| <i>1996—January</i> | 96,386 | 77,172 | 77,223 |
| <i>February</i> | 85,542 | 76,566 | 77,180 |
| <i>March</i> | 83,359 | 77,720 | 77,822 |
| <i>April</i> | 82,153 | 75,312 | 78,931 |
| <i>May</i> | 66,033 | 83,587 | 80,200 |
| <i>June</i> | 68,888 | 82,722 | 81,400 |
| <i>July</i> | 64,087 | 80,146 | 82,025 |
| <i>August</i> | 64,647 | 84,612 | 81,887 |
| <i>September</i> | 85,854 | 78,478 | 81,135 |
| <i>October</i> | 79,381 | 81,475 | 80,076 |
| <i>November</i> | 79,809 | 81,484 | 78,838 |
| <i>December</i> p | 92,000 | 73,496 | 77,759 |

(a) There is an annual recalculation of seasonal adjustment factors to include the most recent year's arrivals. This occurs at the end of each financial year and may cause revisions to previously published seasonally-adjusted and trend figures, as can be seen in Table 14. A full printout of seasonally-adjusted and trend series figures dating back to 1971 can be obtained through the publication officer for this publication (Eddie Oakford).

TOTAL ARRIVALS IN TASMANIA



Source: Tourism Tasmania

EXPLANATORY NOTES

INTRODUCTION

1 This publication contains data for Tasmania from a quarterly survey of tourist accommodation establishments.

SCOPE

2 Tourist accommodation establishments currently included in the survey comprise two groups:

- Establishments which provide predominantly short-term accommodation (i.e. for periods of less than 2 months) to the **general public**. These include:
 - *Hotels, motels and guest houses, with facilities* being hotels licensed to operate a public bar and motels, private hotels and guest houses all of which provide a bath (or shower) and toilet in most guest rooms and have breakfast available for guests. NOTE: From December quarter 1993, hotel, motel and guest house establishments with fewer than five rooms have been formally excluded from the scope of this statistical collection.
 - *Holiday flats, units and houses* (excluding establishments predominantly operated on a time share basis) which are operated by owners, managers or real estate agents who have sole letting rights to at least five flats, units or houses for short-term letting. They are mainly self-contained in terms of cooking, bath (or shower) and toilet facilities and do not have breakfast available for guests. Data for holiday flats, units and houses include short-term owner occupation as well as paying guest occupation.
 - *Visitor hostels* which provide accommodation to visitors on a bed basis (rather than by the room). This category does not include establishments providing charity type accommodation (e.g. Salvation Army hostels) nor hotels, motels and guest houses without in-room facilities which provide accommodation on a per room basis.
 - *Caravan parks* which provide either predominantly short-term (i.e. for periods of less than 2 months) or predominantly long-term (i.e. for periods of 2 months or more) accommodation to the general public and which provide powered sites for caravans and toilet, shower and laundry facilities for guests.

3 Data collected and published for each type of establishment (other than holiday flats, units and houses) include both long-term and short-term guests at these establishments.

4 Establishments which provide more than one type of accommodation (e.g. a motel with attached caravan park) are treated as two or more separate establishments. However, self-contained units, flats, cabins, etc. attached to hotels, motels or to caravan parks are included in the capacity for those establishments and not treated as separate holiday flat, unit or house establishments.

AUSTRALIAN STANDARD

GEOGRAPHICAL CLASSIFICATION

5 Statistics presented in this publication have been classified according to the Australian Standard Geographical Classification (ASGC), Edition 1996. This classification incorporates a number of hierarchic structures of geographic areas. The appropriate spatial units of the main structure of the ASGC used in this publication are defined as follows.

EXPLANATORY NOTES

AUSTRALIAN STANDARD
GEOGRAPHICAL CLASSIFICATION
continued

STATISTICAL LOCAL AREAS (SLAs) are legal Local Government Areas or parts thereof, which serve as the smallest type of spatial unit considered appropriate for the presentation of statistics and which add, without gaps or overlaps, to:

STATISTICAL SUBDIVISIONS (SSDs) which in turn represent another, higher hierarchic level and add, without gaps or overlaps, to:

STATISTICAL DIVISIONS (SDs) which in turn add, without gaps or overlaps, to:

Total Tasmania.

For more detailed information, refer to the ASGC (1216.0).

UNPUBLISHED STATISTICS

6 The ABS may make available on request certain unpublished tourist accommodation statistics. A charge may be made for this information.

RELATED PUBLICATIONS

7 Publications for Australia, and each State and Territory, are released by the respective offices of the ABS. Tourist accommodation statistics for past quarters are available on request. Other ABS publications which may be of interest include:

- *Directory of Tourism Statistics* (1130.0) (irregular: latest issue; 1997)
- *Overseas Arrivals and Departures, Australia* (3401.0) (monthly)
- *Tourism Indicators, Australia* (8634.0) (quarterly)
- *Tourism Accommodation, Australia* (8635.0) (quarterly)

8 Current publications produced by the ABS are listed in the *Catalogue of Publications and Products* (1101.0). The ABS also issues the *Release Advice* (1105.0) on Tuesdays and Fridays which lists publications to be released in the next few days. Both the Catalogue and *Release Advice* are available from any ABS office.

SYMBOLS AND OTHER USAGES

- n.a. not available
n.p. not available for publication but included in totals where applicable
r revised
.. not applicable
--- nil or rounded to zero
— break in continuity of the series (where drawn across a column between two consecutive figures)
(C) City
(M) Municipality

9 Where figures have been rounded, discrepancies may occur between totals and the sums of the component items.

GLOSSARY

| | |
|-------------------------------|--|
| Average length of stay | <p>Average length of stay is expressed in numbers of days and calculated:</p> <ul style="list-style-type: none"> for hotels, motels and guest houses, by dividing <i>Guest nights</i> by <i>Guest arrivals</i> and for holiday flats, units and houses, by dividing <i>Unit nights occupied</i> by <i>Unit lettings</i>. |
| Bed spaces | Three-quarter beds are counted as one bed space; double beds as two bed spaces. Cots are excluded. |
| Capacity | Capacity in terms of <i>Guest rooms</i> , <i>Bed spaces</i> , <i>Holiday units</i> or <i>Caravan park sites</i> , etc. is the maximum number available to accommodate paying guests during the survey period. Capacity closed temporarily for seasonal reasons is included. |
| Caravan park capacity | The total number of <i>On-site vans</i> , <i>Other powered sites</i> , <i>Unpowered sites</i> and <i>Cabins</i> , etc. |
| Employment | The number of persons working at accommodation establishments at the end of the survey period (including working proprietors and those working on other than accommodation activities). |
| Establishments | For hotels, motels and guest houses, caravan parks and visitor hostels, the number of establishments within the scope of the survey which operated for any part of the survey period, or which closed temporarily for the quarter for seasonal reasons. |
| Guest arrivals | The total number of paying guests counted only on the first night they stayed at the accommodation establishment. |
| Letting entities | For holiday flats, units and houses, the number of owners, managers or real estate agents within the scope of the survey who operated for any part of the survey period. |
| Occupancy | <p>Occupancy in terms of <i>Room nights</i>, <i>Unit nights</i> or <i>Site nights occupied</i> refers to the total number of nights each guest room, holiday unit or caravan park site, etc. was occupied during the survey period. NOTE: From September quarter 1992, caravan park sites, etc. permanently reserved for 2 months or more at the end of the survey period but only casually occupied by their tenants have been recorded continuously as <i>Site nights occupied</i> irrespective of whether the tenants of individual sites were in residence on any particular night.</p> <p>Occupancy in terms of <i>Guest nights</i> refers to the total number of nights each paying guest stayed during the survey period.</p> |
| Occupancy rates | <p><i>Occupancy rates</i> represent occupancy expressed as a percentage of total capacity available during the survey period, e.g.</p> $\text{Room occupancy rate (\%)} \text{ for the period} = \frac{\text{Room nights occupied}}{(\text{Guest rooms}) \times (\text{No. of days in the period})} \times 100$ <p>providing that, for establishments closing (other than for seasonal reasons) or opening during the survey period, the denominator of the above expression includes only operating periods.</p> |

GLOSSARY

| | |
|---|---|
| Other sites permanently reserved | The total number of powered and unpowered sites, on-site vans and cabins, etc. continuously let for 2 months or more by the end of the survey period to tenants who occupy the sites only on a casual or sporadic basis. Separate data for this item are available only from September quarter 1992. |
| Room nights available | The number of guest rooms available multiplied by the number of days for which they were available during the survey period. For establishments closing (other than for seasonal reasons) or opening during the survey period, operating periods only are included. |
| Sites occupied by long-term guests | The total number of sites, etc. occupied at the end of the survey period by guests who have stayed continuously for 2 months or more. |
| Star grading | The grading of hotels and motels with facilities based on the classification system used by members of the Australian Automobile Association (AAA). The gradings are allocated according to a points system based on the amenities and facilities available to guests. Details of the grading scheme are contained in the RACV-RAASA members' publication <i>Accommodation Australia</i> , or the individual tour guides produced by members of the AAA. For the purpose of classifying establishments to a star grading in this publication, 'half' star gradings are ignored (e.g. a two and a half star grading has been shown as two star). |
| Takings from accommodation | Revenue received from the provision of accommodation. Takings from meals are excluded. Takings from accommodation for each month generally represent the takings received during that month. Where payments are received in advance of, or after, the provision of accommodation to guests, the monthly figure for takings from accommodation may not necessarily bear a direct relationship to the number of guests accommodated during the month. Rental and storage fees paid to caravan parks for the keeping of private vans in parks are included in the takings of the month they are received. |
| Unit lettings | The total number of times a holiday flat, unit or house was occupied by a new tenant, counted only on the first night it was occupied by the new tenant. |

Statistical Divisions and Statistical Subdivisions, Tasmania, 1996



FOR MORE INFORMATION

The ABS publishes a wide range of information on Australia's economic and social conditions. A catalogue of publications and products is available from any of our offices (see below).

INFORMATION CONSULTANCY SERVICES

Information tailored to special needs of clients can be obtained from the Information Consultancy Service available at ABS Offices (see below).

ABS PRODUCTS

A large number of ABS products is available from the ABS Bookshops (see below). The ABS also provides a subscription service – you can telephone the ABS Subscription Service Australia wide toll free on 1800 0206 08.

ELECTRONIC SERVICES

A large range of data is available via on-line services, diskette, magnetic tape, tape cartridge and CD ROM. For more details about our electronic data services, contact any ABS office (see below) or e-mail us at:

- client.services@abs.gov.au

GENERAL SALES AND INQUIRIES

- Sydney 02 9268 4611 ■ Adelaide 08 8237 7100
- Melbourne 03 9615 7755 ■ Hobart 03 6222 5800
- Brisbane 07 3222 6351 ■ Darwin 08 8943 2111
- Perth 08 9360 5140 ■ Canberra 06 252 6627

- Information Services, ABS
PO Box 10, Belconnen ACT 2616



2863560003977

ISSN 0312-6900

RRP \$15.00